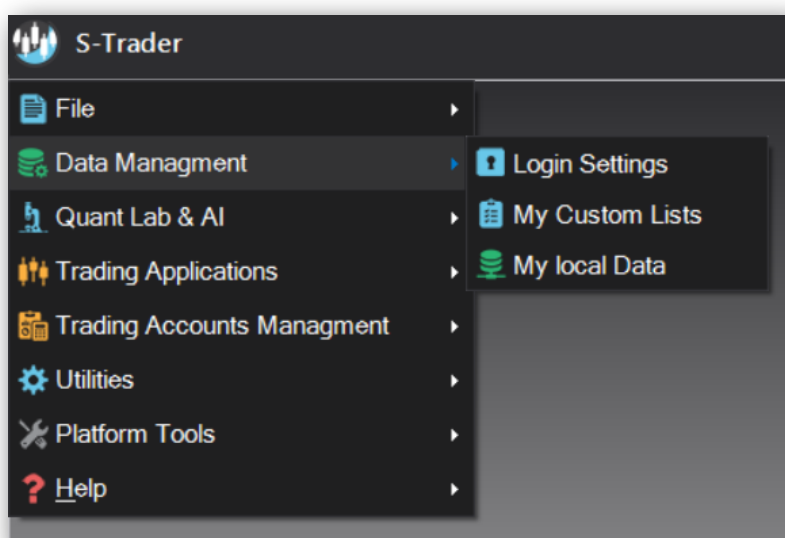




Data Management

Contents

Connectivity overview	2
Local data connector	2
Live data connector	3
Integrated live data feeds	4
IQ Feed	4
Interactive Brokers	6
Stage 5 Trading	9
GAIN Capital	10
FXCM	11
How different modules use connectivity	12
Quote list	12
Loop systems	12
Scripted alerts	13
Portfolio systems	14
RRGs	15
Charting engine	16





Connectivity overview

Local data connector

Connectivity for the local data connector is automatic.

Local Data Connector



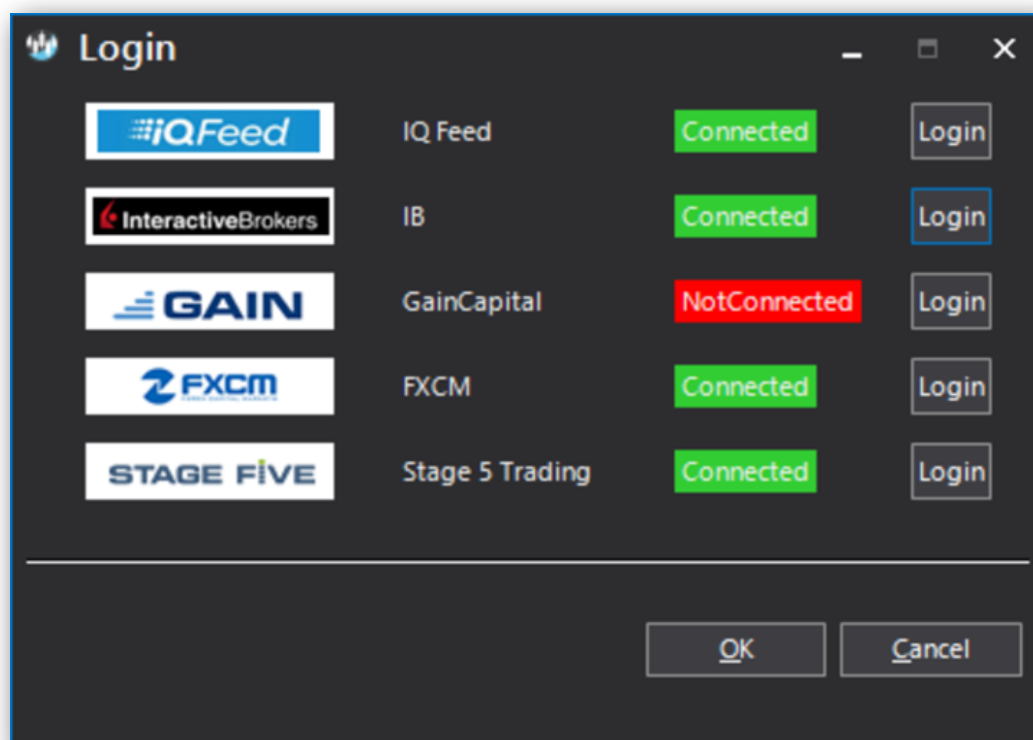
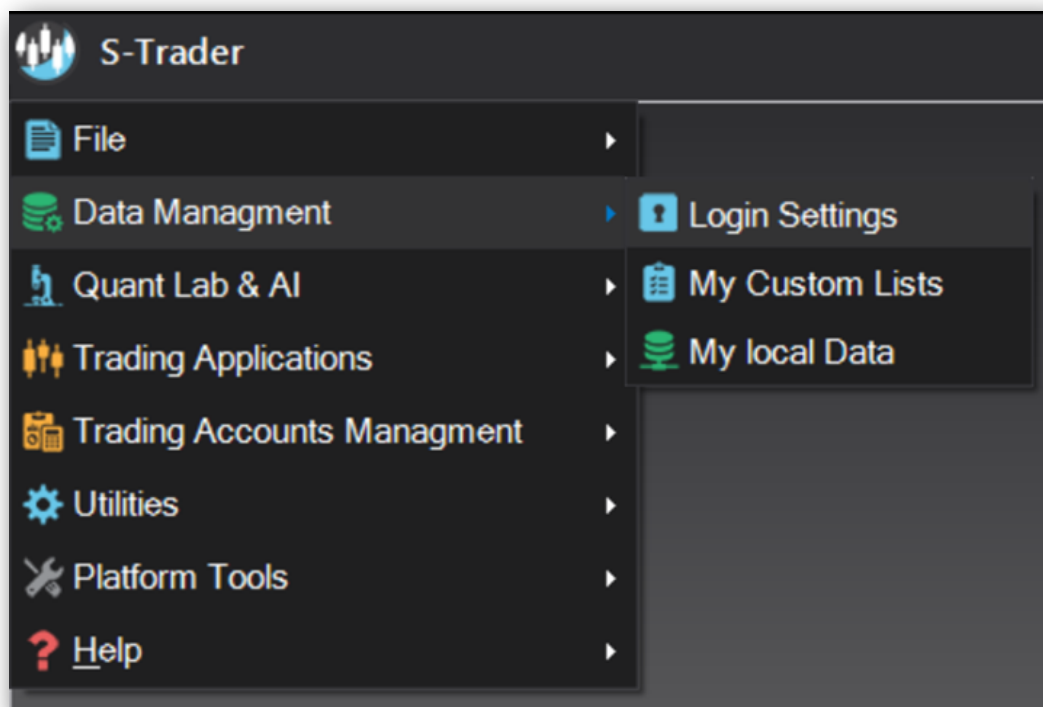
Supported file formats are :





Live data connector

Connectivity for the live data provider is being managed from the Login Settings dialog. This dialog can be open from the main application menu.

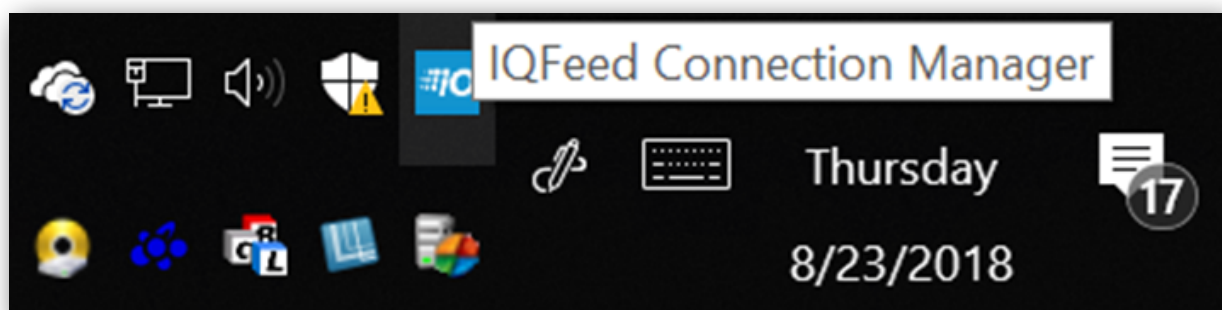
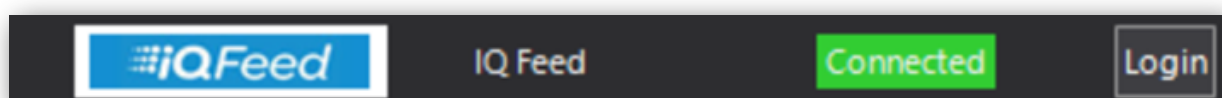
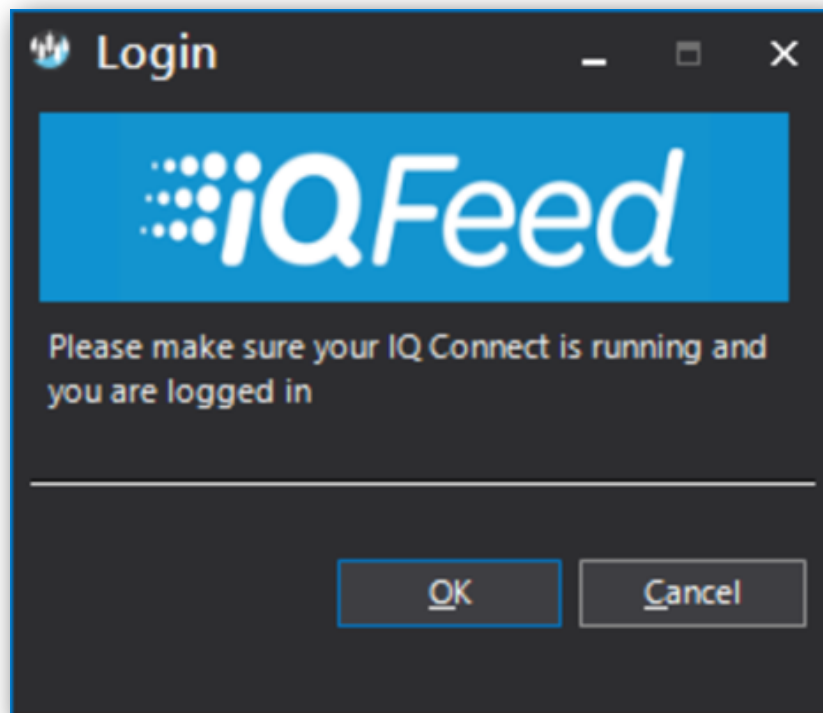




Integrated live data feeds

IQ Feed


The IQFeed connectivity is established right when starting the S-Trader.





IQFeed login credentials are managed inside the IQFeed client which is automatically started and stopped when the S-Trader is started or shut down, respectively.

IQ Connect Login



Login:

Connect

Password or Pin:

Quit

☒ Save Login And Password / Pin

☒ Automatically Connect

Unable to connect to IP list server

^

v

As your agreement for the receipt and use of market data provides, DTN, the Securities Markets and Content Providers (1) reserve all rights to the data they make available; (2) do not guarantee that data; and (3) shall not

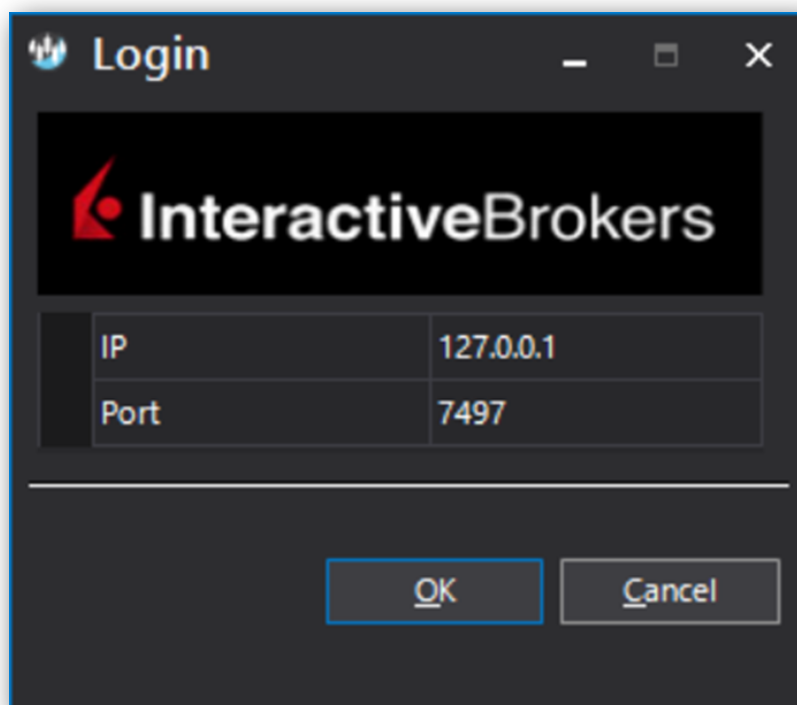
^

v



Interactive Brokers

IB connectivity is tied to IB's own TWS – Trader Workstation platform.



You can specify as IP addresses either the "local" 127.0.0.1 or your computer's own IP address which you can find out by running the CMD ipconfig command:

```
Microsoft Windows [Version 10.0.17134.228]
(c) 2018 Microsoft Corporation. All rights reserved.

C:\Users\map00>ipconfig

Windows IP Configuration

Ethernet adapter Ethernet:

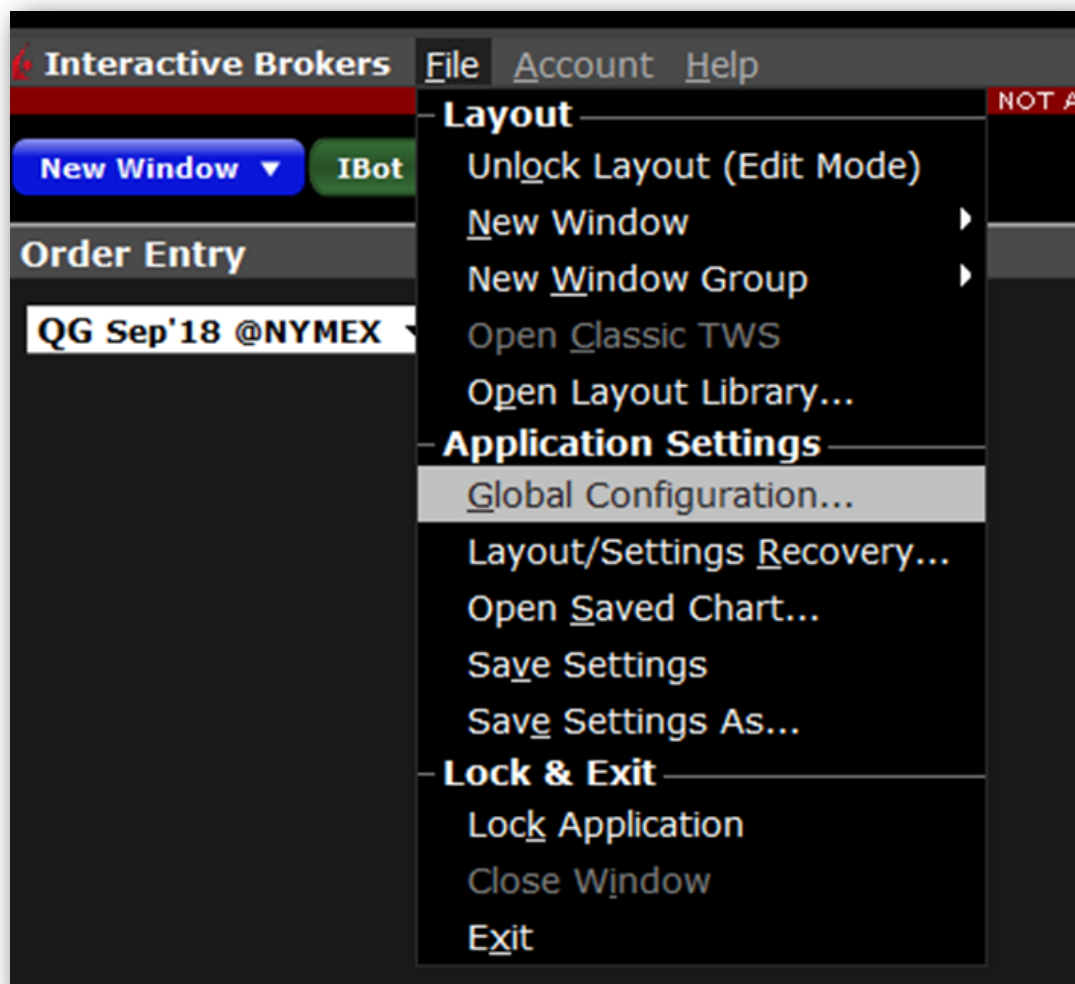
    Connection-specific DNS Suffix  . : hitronhub.home
    IPv6 Address. . . . . : 2607:fea8:4cdf:f98b::2
    IPv6 Address. . . . . : 2607:fea8:4cdf:f98b:219c:f910:f172:e734
    IPv6 Address. . . . . : fd00:bc4d:fbcb:fd62:219c:f910:f172:e734
    Temporary IPv6 Address. . . . . : 2607:fea8:4cdf:f98b:935:70d9:3877:5ef8
    Temporary IPv6 Address. . . . . : 2607:fea8:4cdf:f98b:29ce:4093:2bff:737b
    Temporary IPv6 Address. . . . . : fd00:bc4d:fbcb:fd62:935:70d9:3877:5ef8
    Temporary IPv6 Address. . . . . : fd00:bc4d:fbcb:fd62:29ce:4093:2bff:737b
    Temporary IPv6 Address. . . . . : fd00:bc4d:fbcb:fd62:a162:564c:7b9a:63c4
    Link-local IPv6 Address . . . . . : fe80::219c:f910:f172:e734%17
    IPv4 Address. . . . . : 192.168.0.14
    Subnet Mask . . . . . : 255.255.255.0
    Default Gateway . . . . . : fe80::be4d:fbff:fec6:fd62%17
                               192.168.0.1

C:\Users\map00>
```



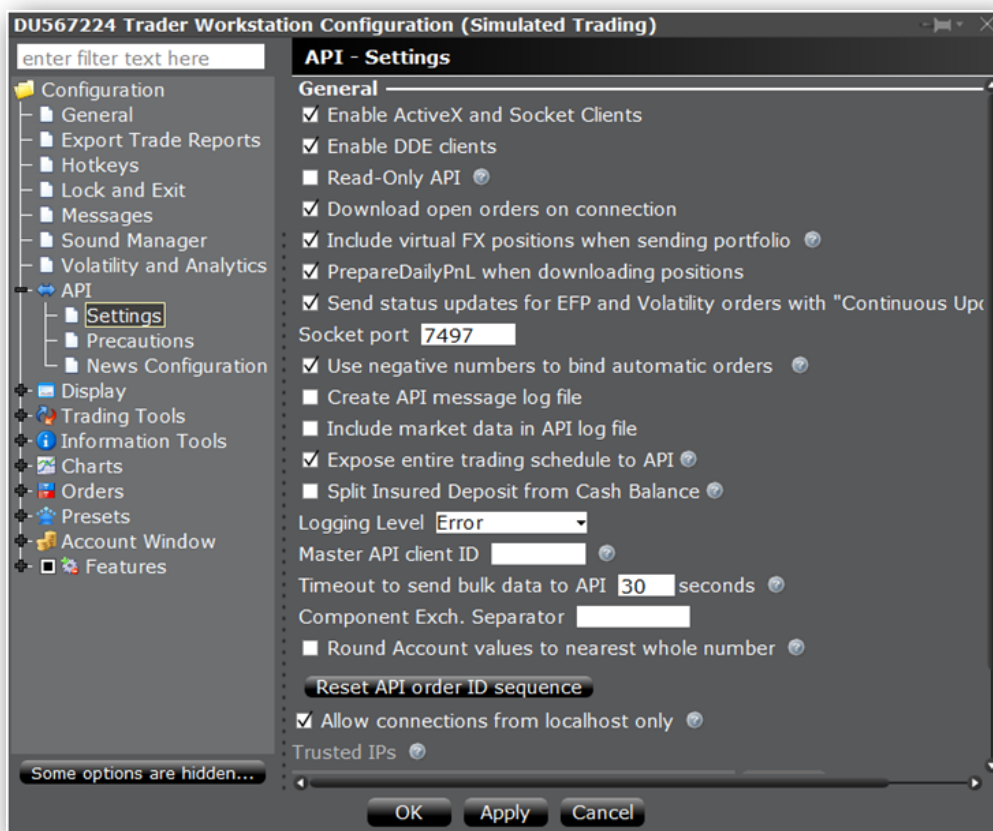
Subsequently you must assign a port for the API connection in TWS:

Step 1: Open Global Configuration Menu in TWS

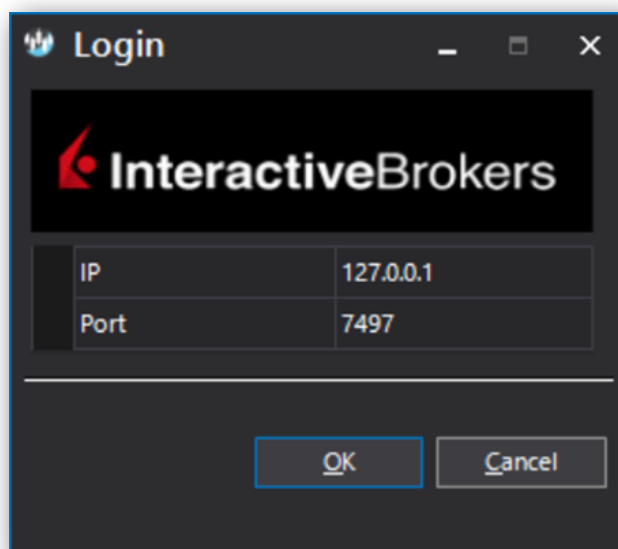




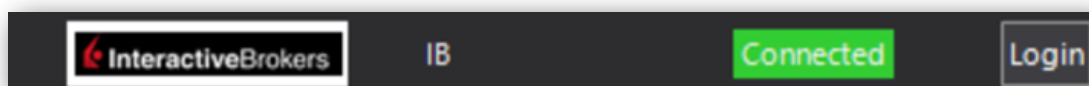
Step 2: Assign a port number for the Socket port



Step3: Introduce that same port number in the IB Login dialog



The connection will be established.



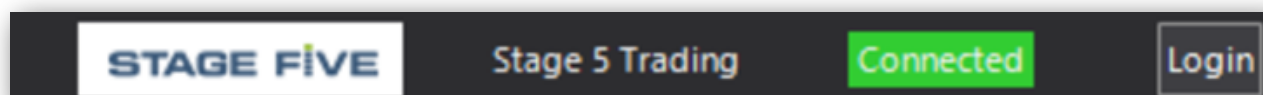


Stage 5 Trading

STAGE FIVE TRADING CORP	
Username	STrader5294
Password	*****
Account Type	DEMO

OK Cancel

Introduce your Stage 5 Login and password then select whether they pertain to a demo or a live account and press OK. The connection will be established.

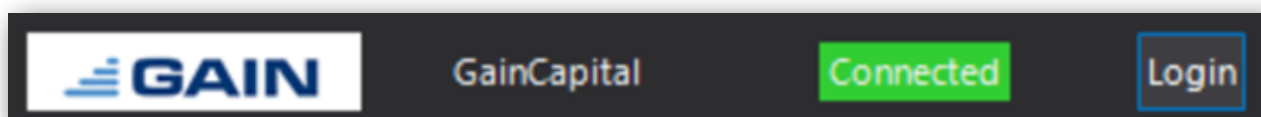




GAIN Capital

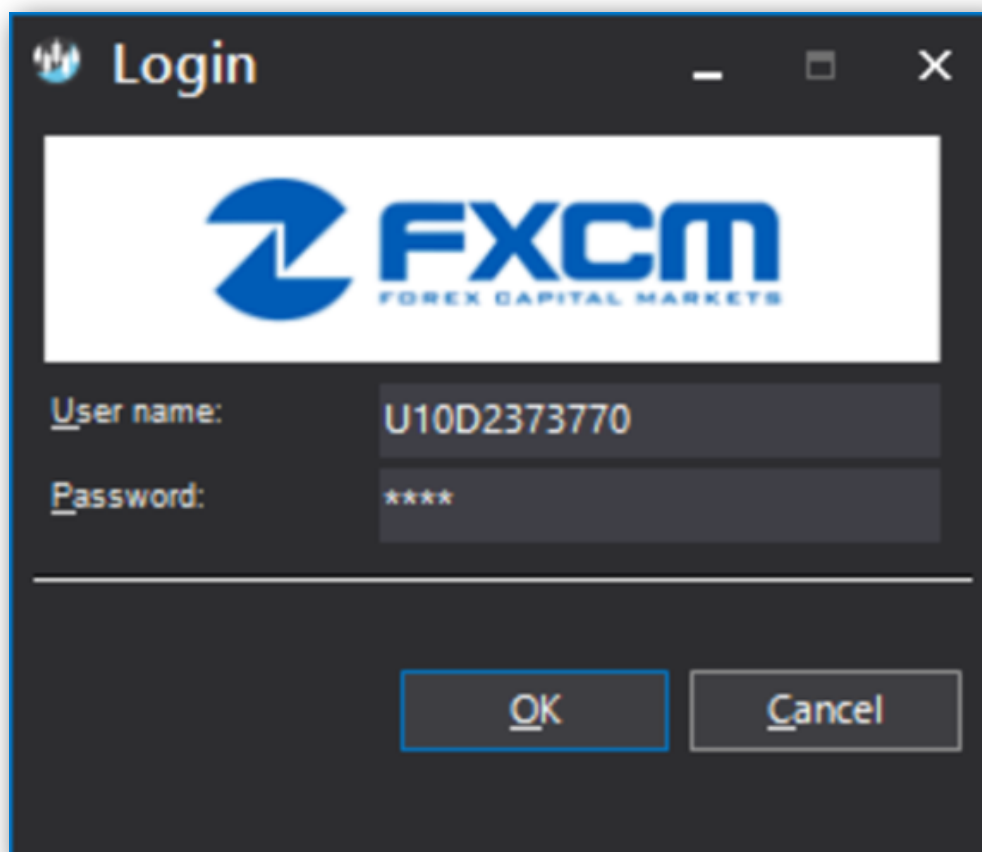
Login	
Username	<input type="checkbox"/> STrader52940
Password	<input type="checkbox"/> *****
Account Type	DEMO
<div>OK Cancel</div>	

Introduce your GAIN Login and password, select whether they pertain to a demo or a live account and press OK. The connection will be established.



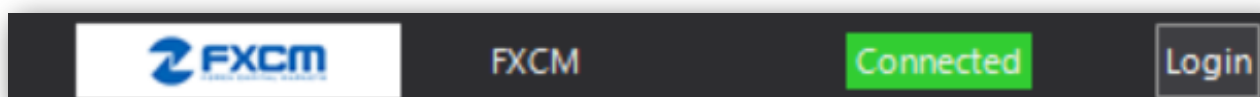


FXCM



A screenshot of the FXCM Login dialog box. The window has a dark gray title bar with the text "Login" and standard window controls (minimize, maximize, close). The main content area is white and features the FXCM logo (a blue stylized 'Z' followed by "FXCM" and "FOREX CAPITAL MARKETS" in smaller text). Below the logo, there are two input fields: "User name:" with the text "U10D2373770" and "Password:" with four asterisks "****". At the bottom, there are two buttons: "OK" and "Cancel".

Introduce your FXCM Login and password and press OK. The connection will be established.

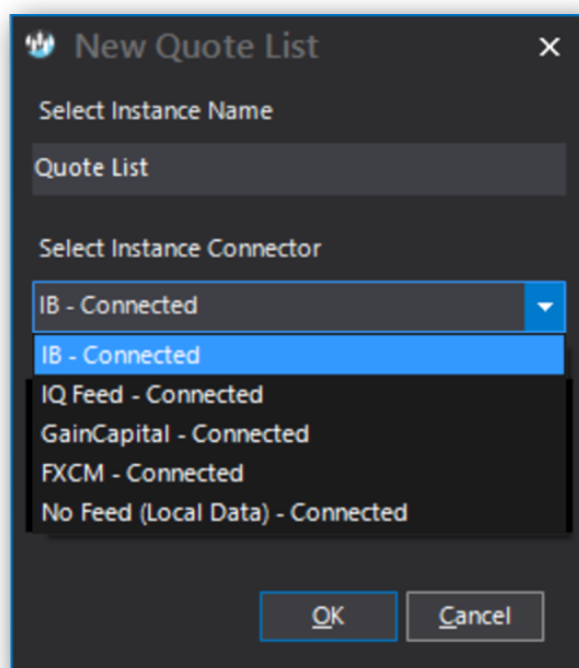




How different modules use connectivity

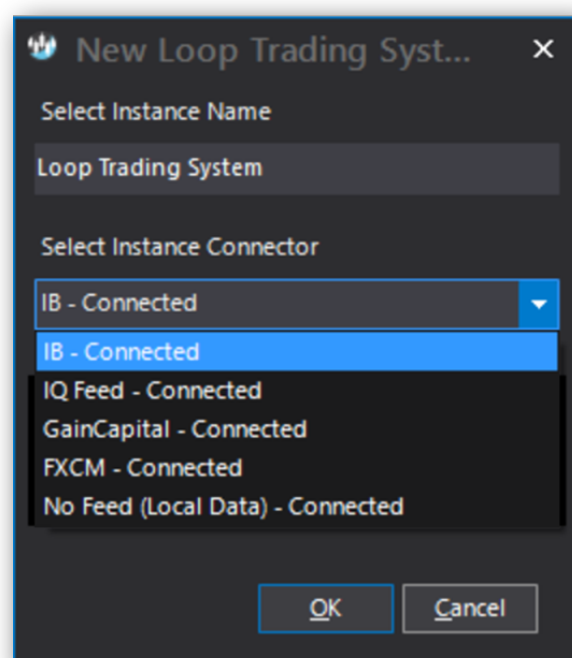
Quote list

Quote lists establish connectivity at the module instance level at the time the Quote list instance is being created.



Loop systems

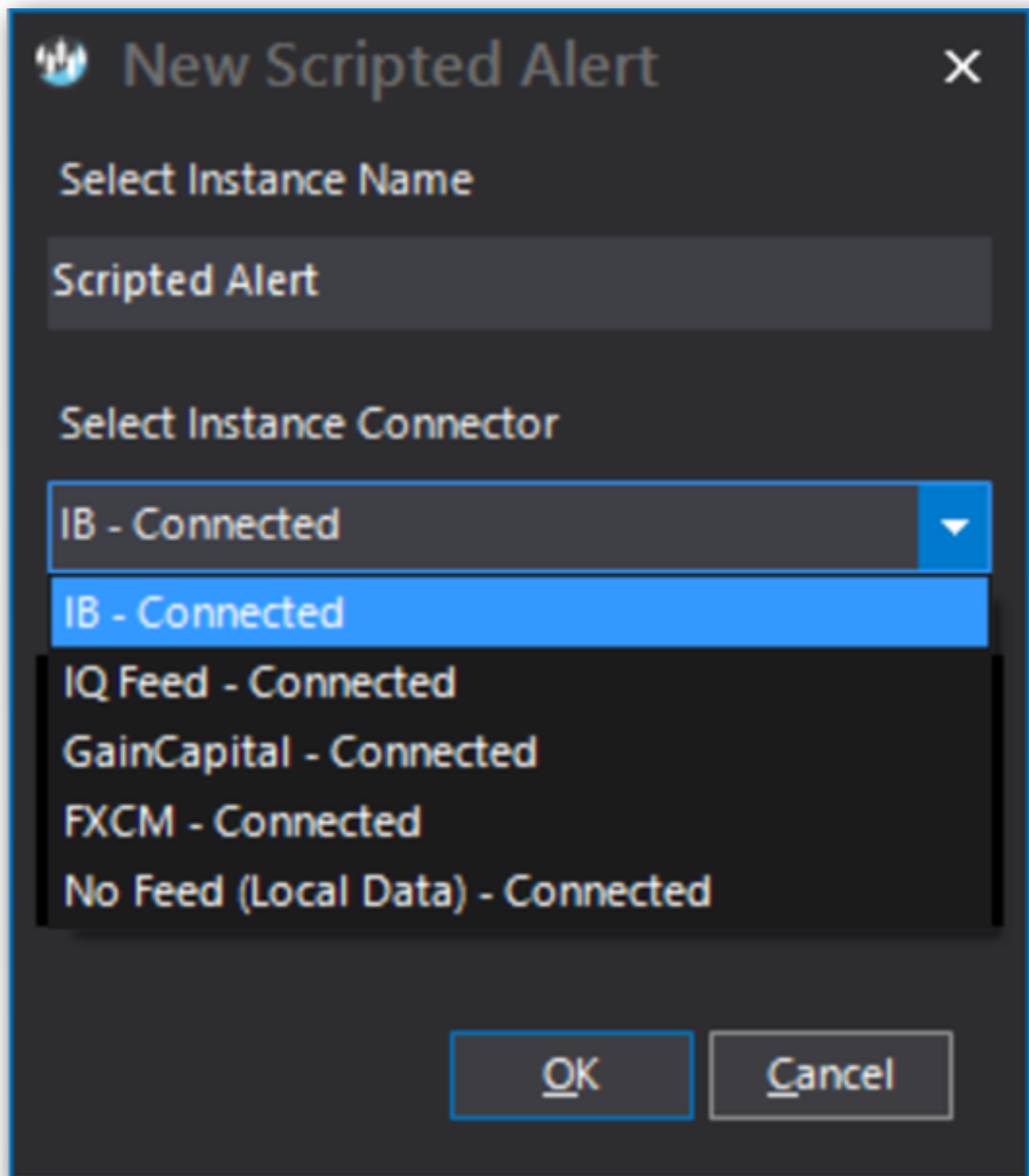
Loop systems establish connectivity at the module instance level at the time the Loop systems instance is being created.





Scripted alerts

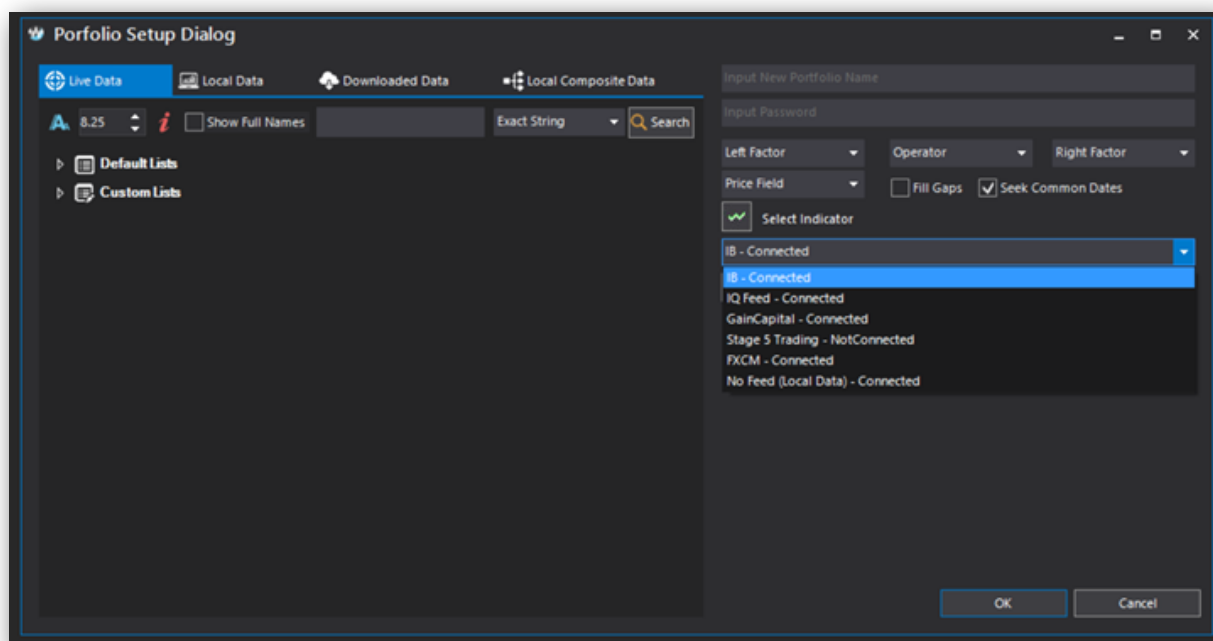
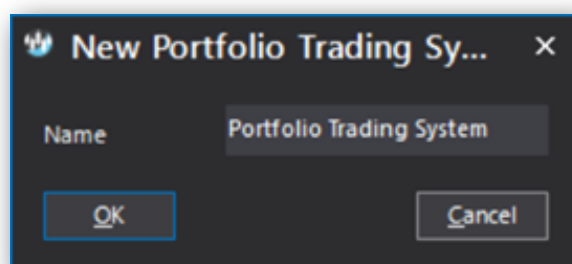
Scripted alerts establish connectivity at the module instance level at the time the Scripted alerts instance is being created.





Portfolio systems

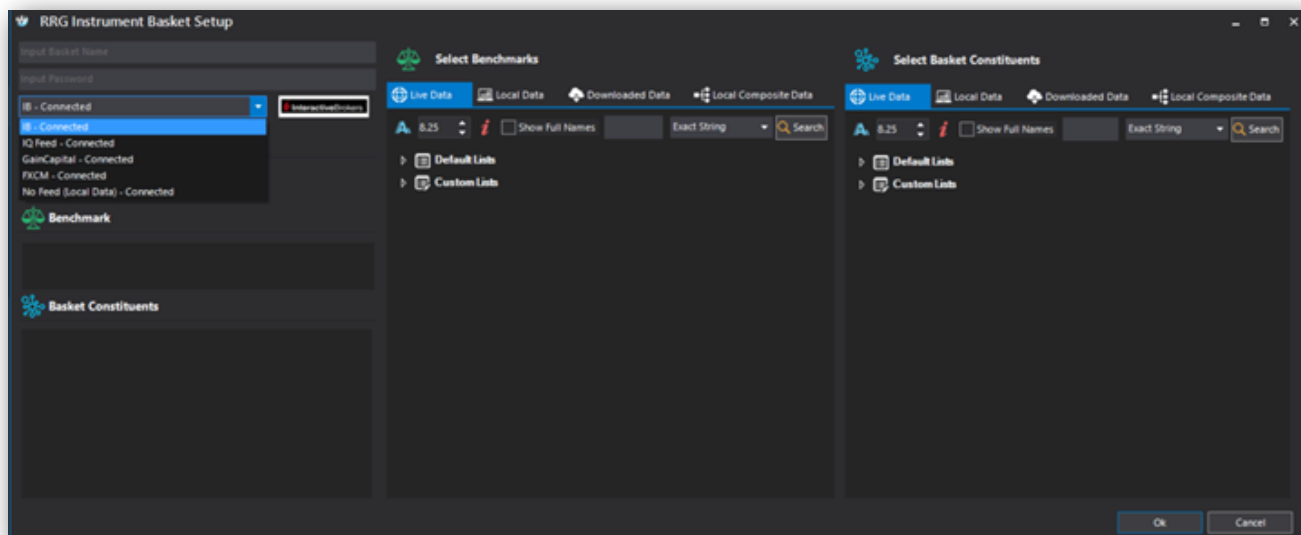
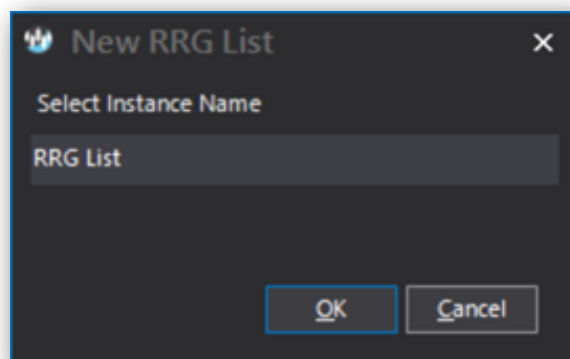
Portfolio systems establish connectivity at the item level, when the portfolio systems are defined. There is no connectivity at the instance level.





RRGs

RRGs establish connectivity at the item level, when the RRGs are defined. There is no connectivity at the instance level.





Charting engine

The chart component establishes connectivity based on the module you open the chart from. The chart trading panel establishes connectivity independently to listen to executable prices and pass orders.

